

# Bolton

q1 2011 business confidence report



## headlines

- February 2011 saw a new record in company closures in Bolton when compared to any previous February.
- January 2011 saw a new record in company closures in Bolton when compared to any previous January.

## contents

new company registrations

closed companies (dissolved)

net company growth

uk company share

director age

director gender

naming trends

sic data

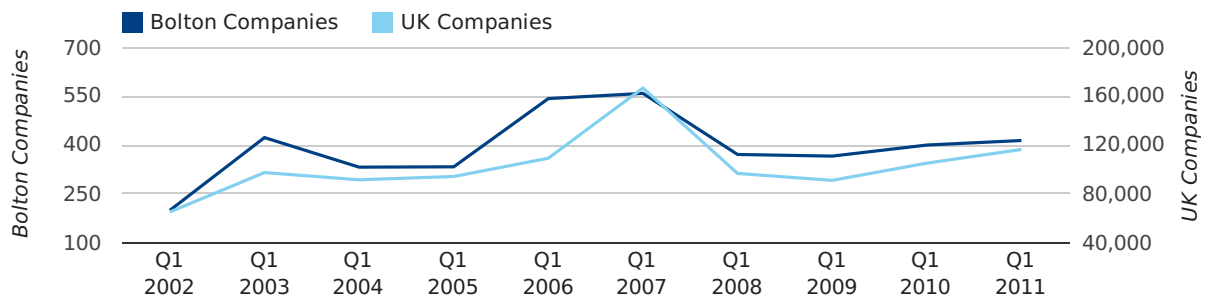
### Quarterly Data (Q1 Jan-Mar 2011)

A total of 414 companies were registered in Bolton during the first quarter of 2011 (Jan 2011 - Mar 2011).

This figure is an increase of 3.5% versus the same period last year (Q1 2010). This figure compares badly to the UK as a whole, which saw an increase of 10.7% against the same period last year.

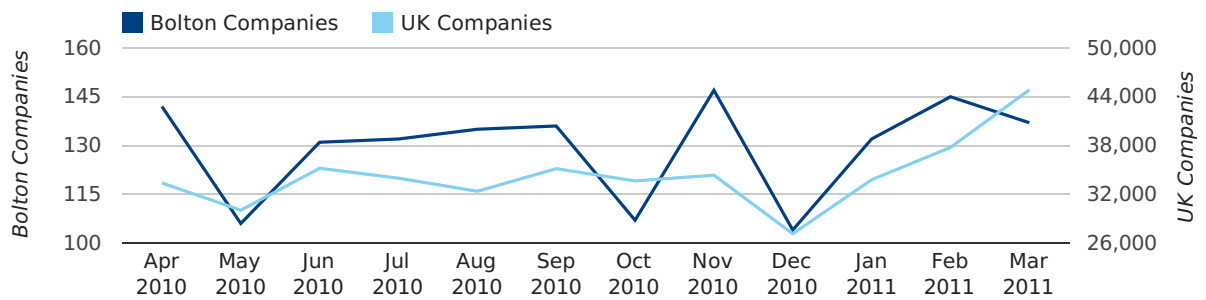
FIRST QUARTER (JAN 2011 - MAR 2011)	BOLTON	UK
2011	414	116,391
2010	400	105,137
% CHANGE	3.5%	10.7%
RECORD YEAR	2007 (559)	2007 (166,814)

### new companies by quarter



### Monthly Data (Jan, Feb & Mar 2011)

### new companies by month



	JANUARY	FEBRUARY	MARCH
NEW COMPANIES IN 2011	132	145	137
NEW COMPANIES IN 2010	104	128	168
% CHANGE	26.9%	13.3%	-18.5%
RECORD YEAR	2008 (137)	2007 (250)	2006 (346)

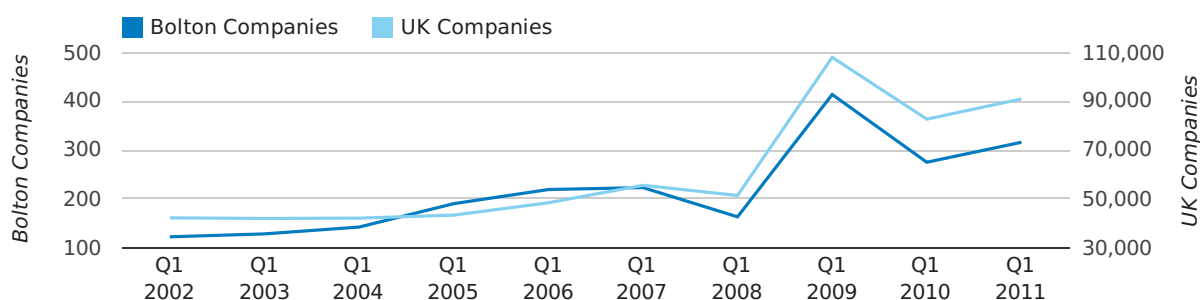
### Quarterly Data (Q1 Jan-Mar 2011)

A total of 316 companies were dissolved in Bolton during the first quarter of 2011 (Jan 2011 - Mar 2011).

This figure is an increase of 14.9% versus the same period last year (Q1 2010). This figure compares poorly to the UK as a whole, which saw an increase of 10.0% against the same period last year.

FIRST QUARTER (JAN 2011 - MAR 2011)	BOLTON	UK
2011	316	90,986
2010	275	82,677
% CHANGE	14.9%	10.0%
RECORD YEAR	2009 (414)	2009 (108,060)

### dissolved companies by quarter



### Monthly Data (Jan, Feb & Mar 2011)

February 2011 saw a new record in company closures in Bolton when compared to any previous February.

January 2011 saw a new record in company closures in Bolton when compared to any previous January.

### dissolved companies by month



	JANUARY	FEBRUARY	MARCH
CLOSED COMPANIES IN 2011	111	119	86
CLOSED COMPANIES IN 2010	76	80	119
% CHANGE	46.1%	48.8%	-28%
RECORD YEAR	2011 (111)	2011 (119)	2009 (272)

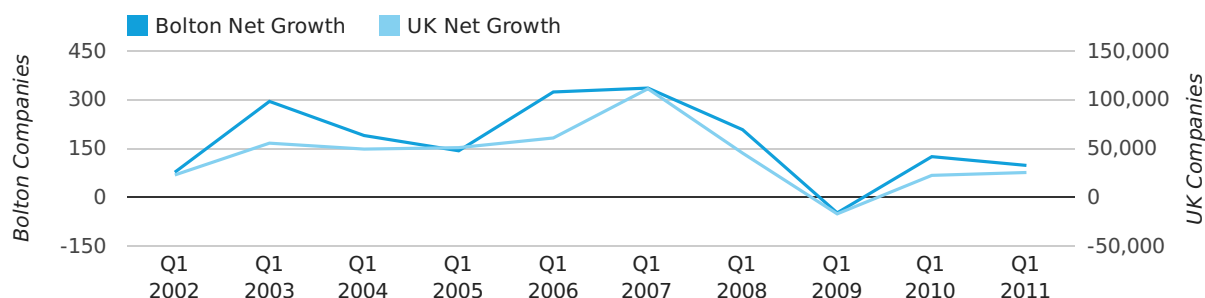
### Quarterly Data (Q1 Jan-Mar 2011)

Net company growth for Bolton during the first quarter of 2011 (Jan 2011 - Mar 2011) was 98 companies.

This represents a decrease of 21.6% on the same period last year.

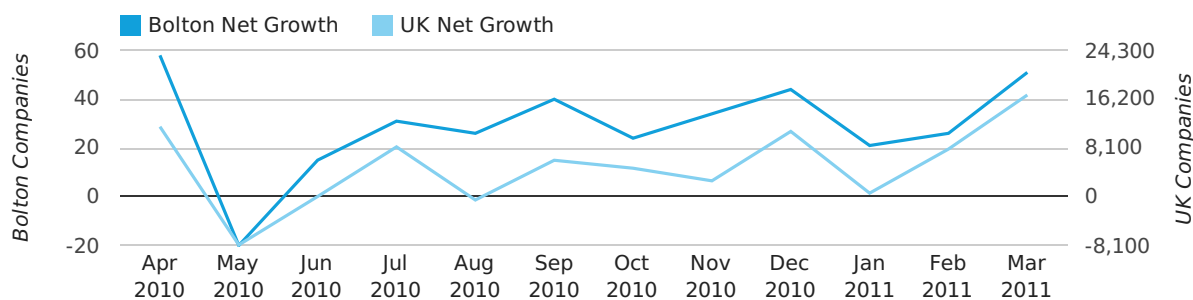
FIRST QUARTER (JAN 2011 - MAR 2011)	BOLTON	UK
2011	98	25,405
2010	125	22,460
% CHANGE	-21.6%	13.1%
RECORD YEAR	2007 (336)	2007 (111,282)

### net growth by quarter



### Monthly Data (Jan, Feb & Mar 2011)

### net growth by month



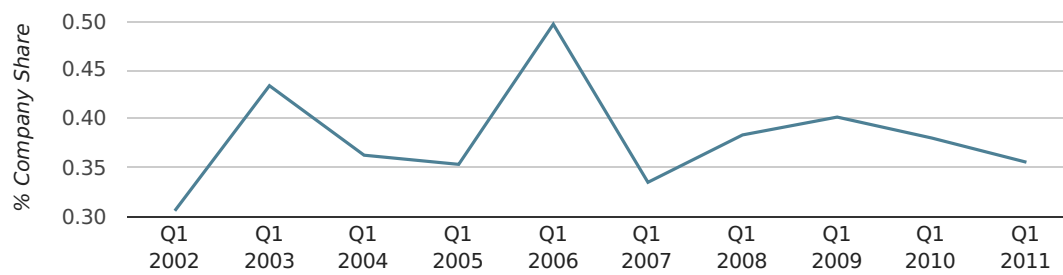
	JANUARY	FEBRUARY	MARCH
NET GROWTH IN 2011	21	26	51
NET GROWTH IN 2010	28	48	49
% CHANGE	-25.0%	-45.8%	4.1%
RECORD YEAR	2004 (85)	2007 (195)	2006 (292)

### Quarterly Data (Q1 Jan-Mar 2011)

In the first quarter of 2011, Bolton formed 0.4% of all UK companies.

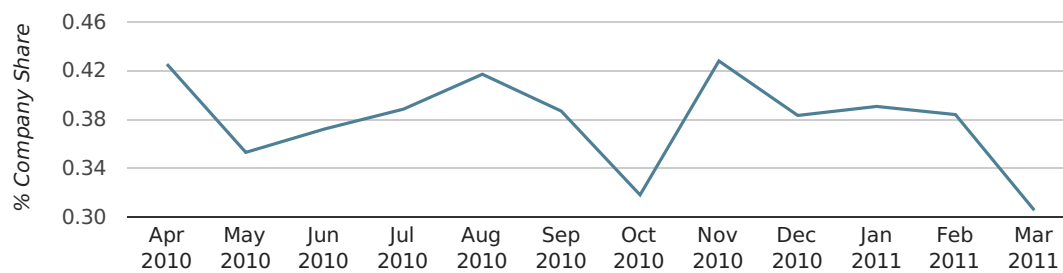
FIRST QUARTER (JAN 2011 - MAR 2011)	BOLTON
2011	0.4%
2010	0.4%
2009	0.4%
2008	0.4%
2007	0.3%
RECORD YEAR (SINCE 1960)	1978 (0.5%)

### company share by quarter



### Monthly Data (Jan, Feb & Mar 2011)

### company share by month



	JANUARY	FEBRUARY	MARCH
UK FORMATION SHARE IN 2011	0.4%	0.4%	0.3%
UK FORMATION SHARE IN 2010	0.4%	0.4%	0.4%
% CHANGE	9.5%	-0.4%	-22.2%
RECORD YEAR	1966 (0.7%)	1960 (0.8%)	2006 (0.8%)

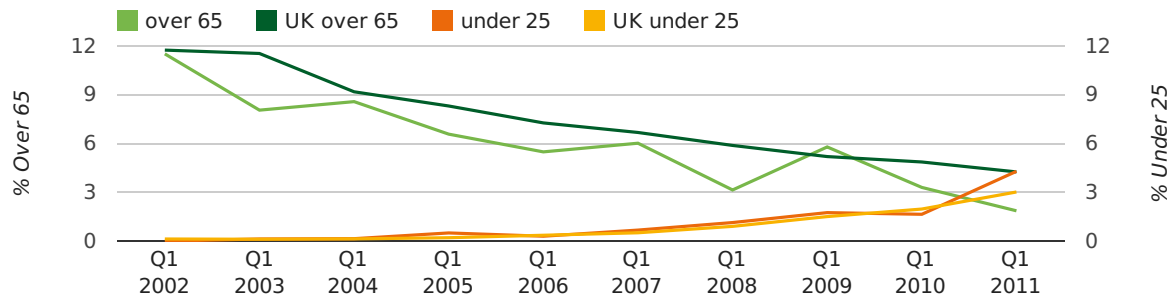
### Quarterly Data (Q1 Jan-Mar 2011)

The average age of a director in the first quarter of 2011 was 43.0.

The percentage of directors under the age of 25 was 4.3% compared to the UK figure of 3.0%.

The percentage of directors over the age of 65 was 1.9% compared to the UK figure of 4.3%.

#### director age by quarter

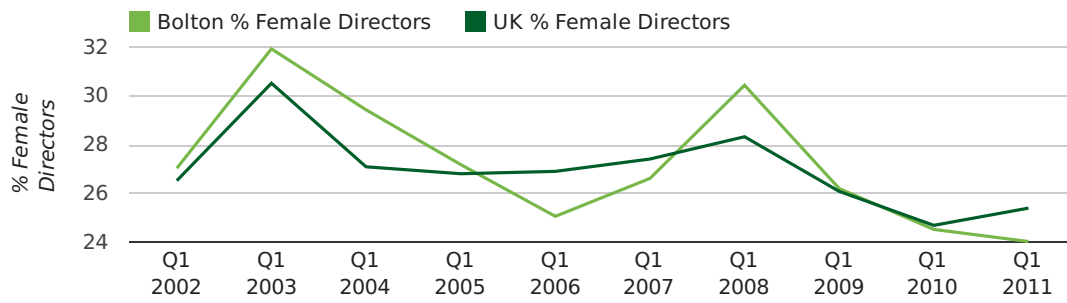


### Quarterly Data (Q1 Jan-Mar 2011)

The record first quarter for female directors in Bolton was in 1861 when 40.0% of all directors were female.

24.0% of all director appointments in Bolton in the first quarter of 2011 were female. This compares to a UK average of 25.4% for the same period.

#### director gender by quarter





## Previous 12 months (Mar 2010-Mar 2011)

Excluding: LIMITED, LTD, &, UK, SERVICES, THE, (UK), AND, LTD., A, LLP, SOLUTIONS, COMPANY, OF.

WORD	PERCENTAGE	UK WORD	UK PERCENTAGE
MANAGEMENT	1.69%	CONSULTING	5.04%
BOLTON	1.11%	MANAGEMENT	4.97%
CONSULTING	0.98%	CONSULTANCY	3.16%
DESIGN	0.84%	PROPERTY	2.38%
ENGINEERING	0.80%	TRADING	2.10%
(BOLTON)	0.80%	DESIGN	1.93%
BUILDING	0.80%	ASSOCIATES	1.92%
ELECTRICAL	0.75%	BUSINESS	1.87%
(NW)	0.71%	CONSTRUCTION	1.80%
TRADING	0.67%	CONSULTANTS	1.76%
PROPERTY	0.67%	MEDIA	1.69%
CONSTRUCTION	0.67%	ENGINEERING	1.61%
CONSULTANCY	0.62%	LONDON	1.60%
CARE	0.62%	CARE	1.45%
BUSINESS	0.58%	J	1.45%
ROOFING	0.58%	GLOBAL	1.44%
MEDIA	0.58%	INVESTMENTS	1.43%
MEDICAL	0.53%	IT	1.41%
SALES	0.53%	PROPERTIES	1.36%
SYSTEMS	0.53%	BUILDING	1.34%
M	0.53%	M	1.30%
SUPPLIES	0.49%	ELECTRICAL	1.28%
ONLINE	0.49%	S	1.24%
HIRE	0.49%	INTERNATIONAL	1.23%
PROPERTIES	0.49%	SYSTEMS	1.23%

## Previous 36 months, excluding companies less than 12 months old

SIC CODE	NUMBER OF COMPANIES	UK COMPANIES
None Supplied	793	202,798
7487 - Other business activities	208	60,968
82990 - Other business support service activities not elsewhere classified	72	30,253
9999 - Dormant Company	56	19,765
70229 - Management consultancy activities other than financial management	50	16,150
99999 - Dormant Company	49	18,336
4521 - General construction & civil engineering	47	6,183
96090 - Other service activities not elsewhere classified	36	10,085
9305 - Other service activities	33	8,740
7414 - Business & management consultancy	28	12,916
86900 - Other human health activities	27	4,092
62090 - Other information technology service activities	25	6,996
74909 - Other professional, scientific and technical activities not elsewhere classified	25	7,788
62020 - Information technology consultancy activities	23	10,246
5530 - Restaurants	22	4,898
7260 - Other computer related activities	22	7,789
69201 - Accounting and auditing activities	22	3,436
86230 - Dental practice activities	22	1,418
43210 - Electrical installation	21	3,172
64999 - Financial intermediation not elsewhere classified	21	2,754